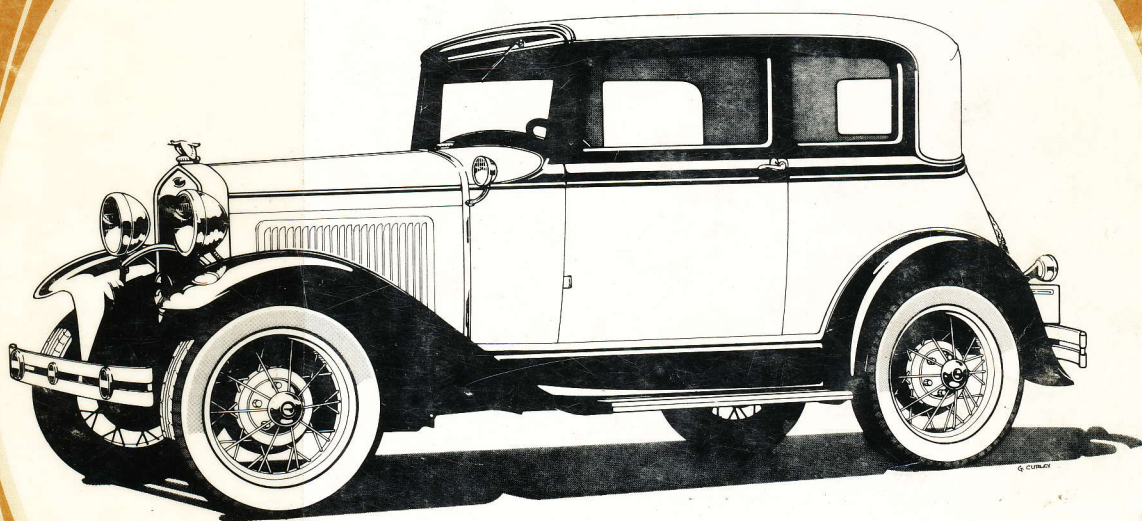


How to Restore Your **Model A** Volume 4



Property of
S.C.V.C.



First edition complete
...from The Restorer

TABLE OF CONTENTS

I – ENGINE AND CHASSIS	
Riveting the Model A Frame	4
Let's Build a Model A Engine	6
Alignment of the Flywheel Housing	10
Rear Axle Rebuilding and Adjustment	16
Ignition Timing for Beginners★	17
Improving the Model A Transmission	22
Aligning the Body and Frame ★	23
Technical Tips:	29
Adjusting Rod & Main Bearings, Speedometer Gear & Cable, Adjusting Shock Absorbers, Crack Detection Methods, Door Handle Installation, Carburetor Air Filters, Oiling Window Mechanisms, Front End Shimmy, Water Pump Seal, Engine Performance, Crankcase Ventilator	
I Never Knew She Could Run So Good!	
Subtle Differences in Distributor Bodies	36
Restoring the Model A Generator ★	40
II – BODY	
Installing Interior Wood in a Victoria	46
Installing Top Wood in a Victoria	52
Installing a Roll-Down Rear Window ★	56
Roll-Down Window Supplement	60
Model A Locks and Keys	62
A Close Look at Metal Top Mouldings ★	68
III – DETAILING	
Model A Windshield Wipers ★	73
Rebuilding and Troubleshooting the Zenith Carburetor	82
Analysing Headlight Scripts	88
Technical Tips:	91
Installing the Gearshift Spring, Pinion Bearing Replacement, Balancing a Fan Blade, Throttle Shaft Air Leaks, Body Deadener, Gas Filter Replacement, Leaking Rear Main Bearing, Positive Crankcase Ventilation, Popout Switch Lubrication, Battery Installation, Securing Radiator Ornaments, Replacing Top Material	
Finishing Touches	94
More Finishing Touches	98
Spare Wheel Carriers	100
IV – RESTORING A UNIQUE BODY TYPE	
Researching and Restoring the Model A Mail Truck	102
Technical Tips:	112
Avoiding a Broken Water Outlet Casting, Hood Rod Repair, Engine Assembly, Smooth Shifting	

★ Bill Reeder Literary Award winners